

JULY/AUGUST 2010

HOME DECOR & furnishings

THE MAGAZINE FOR PAINT, WALLPAPER & HOME FURNISHINGS RETAILERS

Create a stir with
ARTHOUSE
Wallcoverings

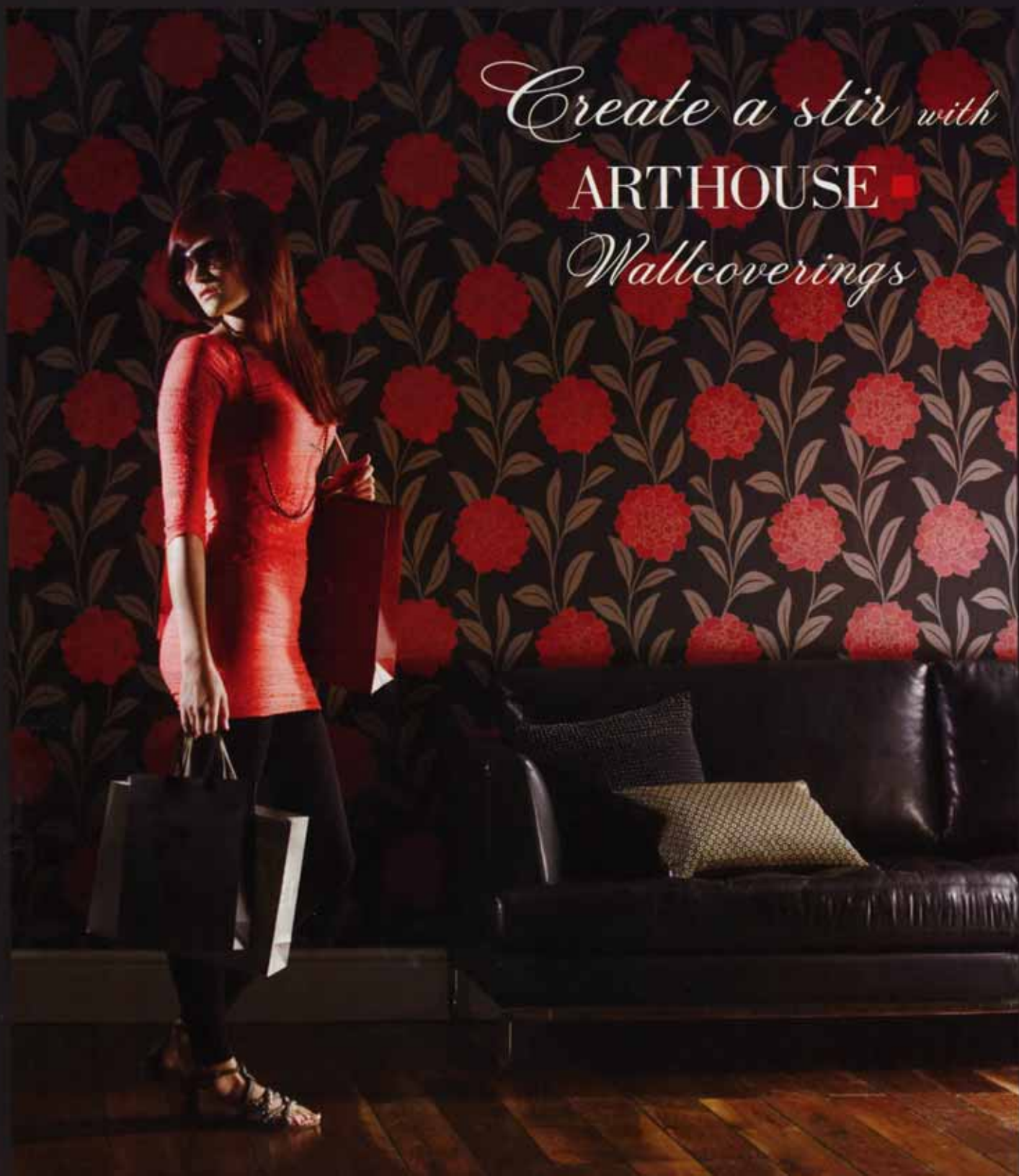




Table and stool covered in kimono fabric with a water-repellent finish by Muranaka, part of the cooperative, Japan Brand Textiles.

One of the major events to be held in the East End during the London Design Festival 2010, Tent London is both a trade and consumer show, offering visitors the opportunity to buy new and unique designs direct from the exhibitors. The event continues to expand its presence within the Festival, and this year will be presenting Origin: The London Craft Fair, for the Crafts Council, at the newly-refurbished Old Spitalfields Market, across the road from the Truman Brewery. The London Craft Fair is re-locating to the East End from Somerset House with a new September timing, and together the shows will offer work from over 400 exhibitors.

British design talent at Tent London this year will include new offerings from Ashby & Boyle, Alex Randall, Curiosa & Curiosa, The Foundry, Kitty & Dude and Orchard Studio. Many of these designers are using traditional techniques such as embroidery, upholstery

and crochet in innovative ways, combining them with new technologies to create interior accessories with a twist. Returning from a successful show at Tent London last year with new



ABOVE: Lichen, and right, Moss, from the Taylor Head collection of wallcoverings by Canadian company Mushaboom Design.

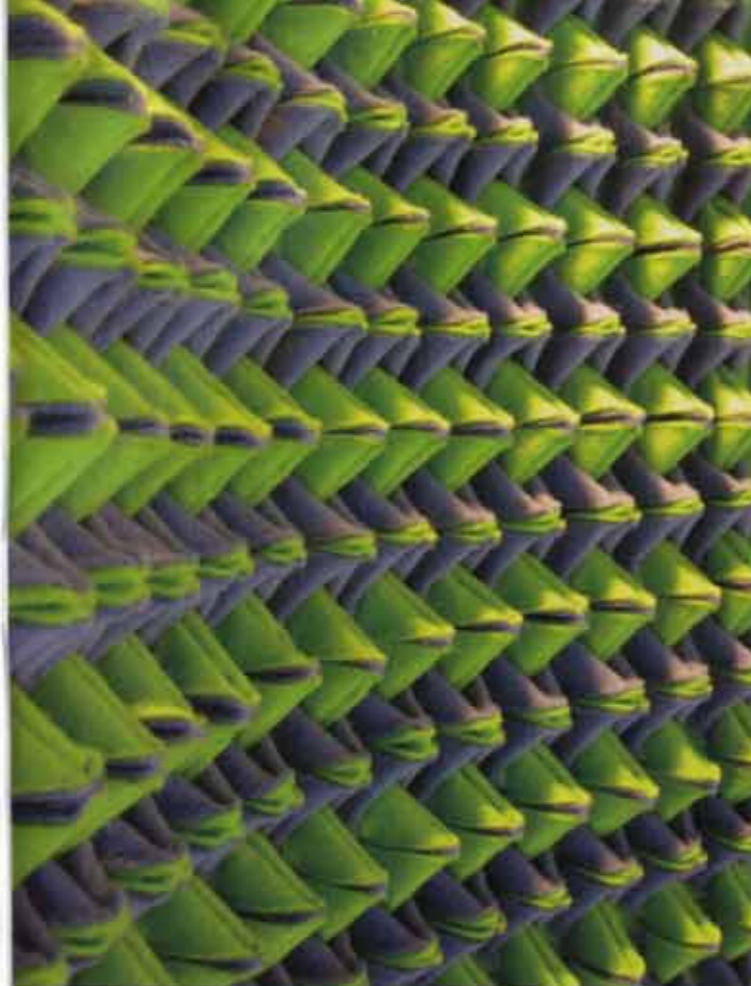


Innovative design from around the world

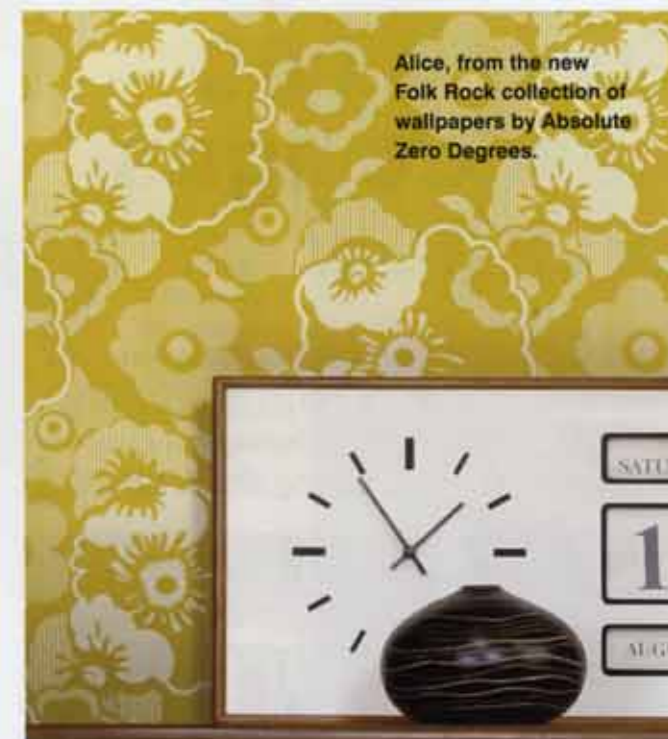
Now in its fourth year, Tent London at the Truman Brewery in Brick Lane from 23 to 26 September will showcase diverse and innovative design from home-grown talent together with collections from a strong overseas contingent of exhibitors

TENT LONDON

- Truman Brewery, Brick Lane, London E1 6QL
- 23 September: 10.00am - 8pm
- 24 September: 10.00am - 8pm
- 25 September: 10.00am - 8pm
- 26 September: 11.00am - 6pm
- www.tentlondon.co.uk



ABOVE: Penelope Jordan will be showing bespoke textile art pieces using materials such as felt to create tactile as well as visual effects.



Alice, from the new Folk Rock collection of wallpapers by Absolute Zero Degrees.

designs for 2010 are Zoe Murphy, Jon Male, Jessica Light and Mini Moderns. Ercol will be celebrating its 90th anniversary at the show with two new ranges of interchangeable upholstery and a re-issue of the Studio couch.

Tent Digital held a successful inaugural event last year, and for 2010 the show-within-a-show will grow to fill an area of over 800 sq.m with digital installations to give visitors a glimpse of the future, plus a programme of talks. Tent London will also be working with Kingston University to host an exhibition of work by current MA Design students, and Tent Selects will be a designated area to showcase work from the next generation of innovative designers. For more information, visit www.tentlondon.co.uk and www.originuk.org

Bespoke contemporary trimmings on show at Tent London will include Jacqueline Wharam's Tassels By Leaf collection, left, and the Antibes collection by Jessica Light, below.

